



**The Wellness Device that will transform your life!**



## WHAT IS eMedica?

eMedica is a wellness device that generates specific voltage, current combinations, and frequencies (which is food for the cell to function effectively), to control and manage targeted diseases within the human body. When an individual is sick, the potential of their cells drops. Improving the membrane potential of each cell improves the immune system. eMedica improves the charge of your blood cell allowing it to function at its best, which enables you to recover faster from various diseases. eMedica revives and strengthens the body cells to allow your body to cure itself.

eMedica is a non-invasive and natural way of healing. Its proven science and certified technology has no side effects and can reduce the stress of medication by using eMedica daily.

**eMedica is  
CE, ISO & ROHS  
certified**





# Who can use eMedica

One device can be used  
to improve the health  
of the entire family.



## CONTROL

A person who is suffering from a specific disease. eMedica will help rejuvenate the cells, giving the cells the capability to control the disease.



## DETOX

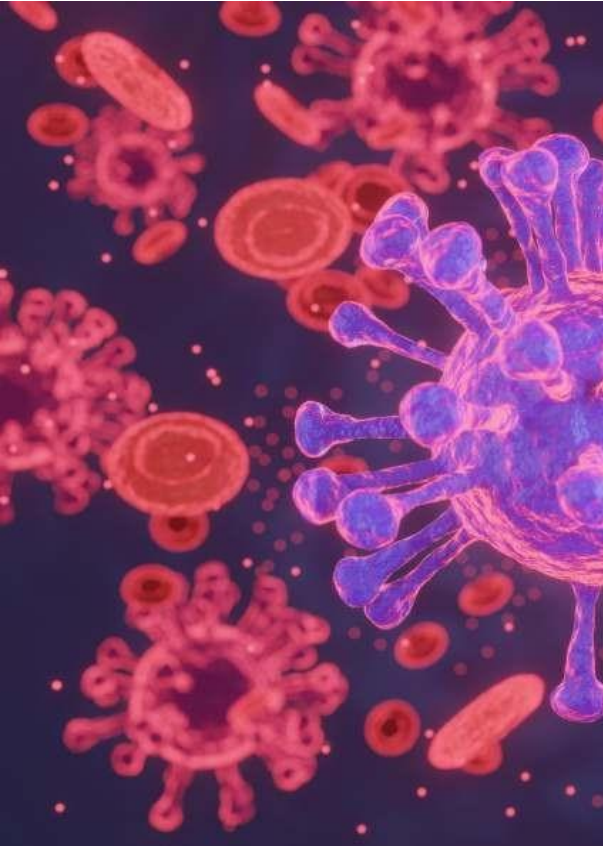
Someone who is borderline. eMedica will help detox the body by empowering the cells



## PREVENT

Someone who has no disease but wants to boost their immunity and balance their pH levels should also use eMedica so they will not have health challenges in the future.

## WHAT IS A DISEASE?



A disease is "any harmful deviation from the normal structural or functional state of an organism."

Our body is nothing but trillions of cells. Each cell has a function and duty. To perform these functions effectively, our body requires power/energy in the form of cell energy-voltages and frequency.

If the cell has proper voltage and frequency it will function effectively and will manage any issues within the body.

When the cell voltage and frequency reduce due to various reasons such as aging, pollutants, and chemicals in the food, pollutants in the air, etc. our cell gets damaged and can't function optimally, that's when we get a disease.

## WHY eMedica IS BETTER THAN LONGTERM MEDICATION ?

Medicine is a chemical that works on a disease and in turn harms other organs such as your kidneys, liver, etc, and creates heart blockages.

Medication does not revive the body cells, eMedica revives and rejuvenates the body cells.

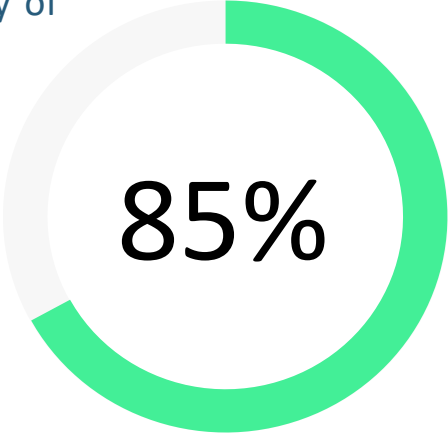
eMedica is a non-invasive product that has no side effects. A non-invasive way of healing is the best way to stay away from medication.

### MEDICINES

Harms your  
kidneys

Ages your  
organs

Creates  
Heart  
Blockage

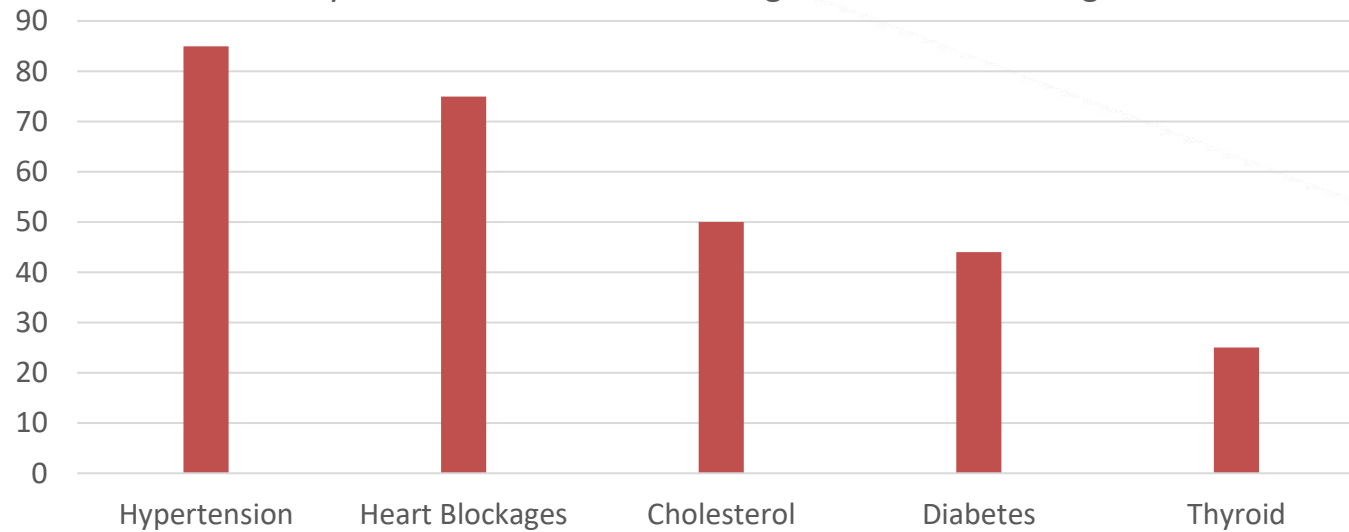


85%



# Side effects of Medication

Kidney Failure Chances Due To Long Term Medicine Usage



- 85% of people suffers from kidney failure due to Consumption of Hypertension medication for a longer period of time.
- 75% of people suffers from kidney failure due to Consumption of heart blockage medication for a longer period of time.
- 50% of people suffers from kidney failure due to Consumption of cholesterol medication for a longer period of time.
- 44% of people suffers from kidney failure due to Consumption of Diabetes medication for a longer period of time.
- 25% of people suffers from kidney failure due to Consumption of Thyroid medication for a longer period of time.

## FAQ

Various diseases and how eMedica can help!

Empowers your body by Enhancing your cell charge and to heal your body naturally.

Works on your cells to strengthen your organs.

- Diabetes
- Parkinsons
- Kidney Damage
- Cholesterol
- Obesity
- Hypertension
- Thyroid
- Cancer
- FAQ – Covid-19

## TWO WAYS IN WHICH eMedica WILL CONQUER CORONA.

- FACT 1 – It is a known fact when any virus inside the human body comes in contact with mild current dies there & there itself
- FACT 2 – Corona is a respiratory virus and it mainly damages the Alveoli level, because of a battle between virus and antibodies causes inflammatory Oedema which leads to a collection of fluid in Alveoli and thereby oxygen exchange deficit happens which is called as “Innocent Bystanders effect”.

eMedica here will not only control viral load by killing them but also create the favorable condition by strengthening cell membrane, increasing cell vitality & producing a favorable alkaline medium because of which cell can fight this viral infiltration strongly. This will lead to less Oedema and not letting further complications occur which is obstructing the oxygen exchange. This Oedema is the main culprit in Covid – 19.





## DIABETES



Beta cells are cells that make insulin, a hormone that controls the level of glucose (a type of sugar) in the blood. Beta cells are found in the pancreas within clusters of cells known as islets.

- eMedica Improves the cell charge of Beta-cell Which in turn improves the function of the organ to enhance the production of the insulin
- The fat layer in the blood restricts the insulin to reach the cell which causes High blood sugar for Diabetic patient, eMedica burns the fat layer in the blood which helps the insulin to reach the cells, which helps to reduce the blood sugar level in a healthy way without the use of Harsh Chemicals. While using the eMedica burning fats in the blood reduces
- the thickness of the blood, Thick blood or hypercoagulability is a condition where the blood is thicker and stickier than usual. When a person has hyper-coagulability, they are prone to excess blood clots. While stimulating your body thru eMedica, it improves
- blood circulation, improves the Overall Health parameters in a Natural and Non Invasive way.

## ACUTE KIDNEY FAILURE

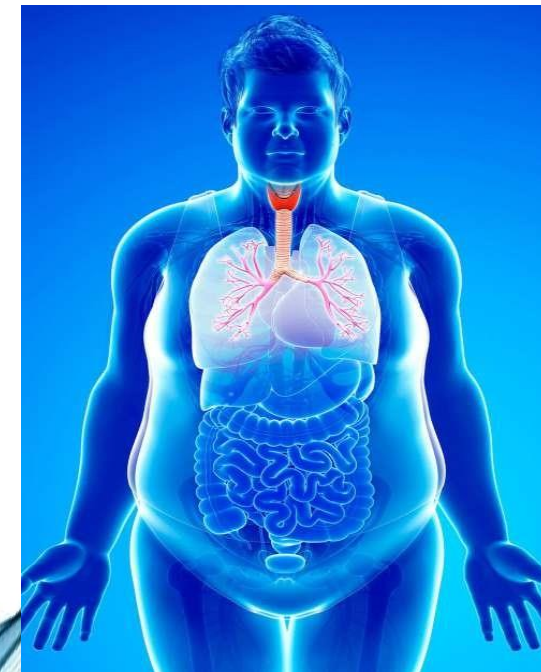


Acute kidney failure occurs when your kidneys suddenly become unable to filter waste products from your blood. When your kidneys lose their filtering ability, dangerous levels of wastes may accumulate, and your blood's chemical makeup may get out of balance.

- The renal corpuscle consists of a tuG of capillaries called a glomerulus and an encompassing Bowman's capsule. The renal tubule extends from the capsule. The capsule and tubule are connected and are composed of epithelial cells with a lumen. A healthy adult has 1 to 1.5 million nephrons in each kidney.
- eMedica helps to enhance the charge Epithelial cells, which in turns improve the Kidney function, which improves the Urine output of the patient gradually

## OBESITY

- Obesity is linked to the development of cardiovascular diseases, including atherosclerosis and hypertension, and to an increased risk for heart failure (HF). Obesity has been shown to adversely affect the leG ventricular structure, as well as systolic and diastolic function.
- eMedica helps to burn the fats in your blood, it also improves the blood circulation, and improves the cell charge of the blood cells, Which would help the user maintain the body weight, without exercise the fat cells in the body gain fat through fat in the blood eMedica helps to burn the fat in the blood

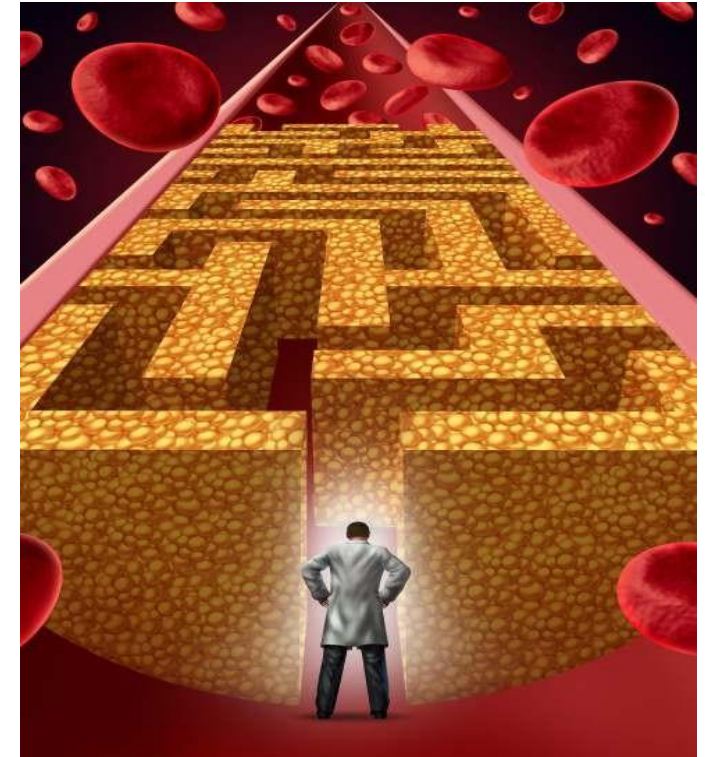




## CHOLESTEROL

Cholesterol is a fat-like, waxy substance that helps your body make cell membranes, many hormones, and vitamin D. The cholesterol in your blood comes from two sources: the foods you eat and your liver. Your liver makes all the cholesterol your body needs.

- Cholesterol and other fats are carried in your bloodstream as spherical particles called lipoproteins. The two most commonly known lipoproteins are low-density lipoproteins (LDL) and high-density lipoproteins (HDL)
- eMedica helps to burn the fats in your blood, it also improves blood circulation, and improves the cell charge of the blood cells, which in turn maintains the cholesterol levels with the use of E-Medica.
- With the use of eMedica helps to burn the Protein fat in the blood which in turn increases the Vitamin level in the blood.





## HYPERTENSION

A high level of cholesterol in the blood doesn't have obvious symptoms, but it can increase your risk for conditions that do have symptoms, including angina (chest pain caused by heart disease), high blood pressure

E-medica helps burn the fat in the blood which in turns in smooth blood flow, It supports to stabilize the Blood Pressure of the user



## THYROID

- HYPO OR HYPERTHYROIDISM is a clinical condition wherein the function of the Thyroid gland is disturbed.
- E- Medical reverts back the morphology correcting the dysfunction of gland thus requiring very little medication which is for a lifetime.

## CANCER

- Cancer is preponed duplication of the cell before it attains maturity because of early duplication, the cell membrane can not get its strength.
- If we strengthen the cell membrane the rate of duplication can be retarded which in turn will control the progression of malignancy.
- With its dedicated frequency, current, and voltage eMedica will strengthen the cell membrane thereby increasing the membrane stability which will dampen the progression of the disease. This has the advantage of the reduction in dosage of ant malignancy therapy and its side effects.



## PARKINSONS

Tremor. A tremor, or shaking, usually begins in a limb, oGen your hand or fingers, Slowed movement (bradykinesia) Rigid muscles, Impaired posture and balance, loss of automatic movements, Speech changes.

- Parkinson's disease is caused by a loss of nerve cells in the part of the brain called the substantia nigra. Nerve cells in this part of the brain are responsible for producing a chemical called dopamine.
- eMedica helps to enhance the charge of the Nerve cell, which in turn improves the health of the patient.





## NOTES

- The Science Behind E–Medica operates on improving the cell charge of the targeted cell with Dedicated frequencies.
- Improving the cell charge in turns to improve the the function of the Organ.
- Improving the cell charge in turns to improve the immune system.
- Improving the cell charge in turns to improve the ph levels of the blood.
- It burns the protein fat in the blood which allows improving blood circulation reduces chances of Heart Failures reduce blockages.
- The Protein fat is converted into vitamins which helps from the conditions of improving Vitamin levels of the body.
- Who can't use eMedica
  - Patients with Pacemakers in the Heart
  - Children Below 8 Years
  - Pregnant women
  - Which are the patients who might not benefit
  - A dead cell or a dead organ cant be revived
  - But before losing hopes the device should be tried at least for 15 days with a specific program before we consider the cell or organ iscompletely dead



## IMPORTANT NOTES

- ❑ We do not advise patient to quit the medicine.
- ❑ But patient can reduce the stress of medicine Gradually (by doctors advice) only if his body parameters are seen improved and monitored by their doctor after the use of eMedica.
- ❑ Sometimes we see a spike in blood sugar levels after usage of eMedica, Since we are burning fat in the blood the fat gets converted into energy (Sugar). So we notice a spike immediately after use but after 60 minutes of usage, we see a drop in sugar levels. So for some people, it takes 60 mins for the frequencies to impact your body after usage.
- ❑ If a patient has diabetes then we need an HbA1c(Hemoglobin A1C) test report before and after using eMedica regularly for 45 days.
- ❑ If a patient has cholesterol then we need an lipid profile test report before and after using eMedica for 2 Hours.
- ❑ If a patient has Thyroid then we need an TSH (thyroid-stimulating hormone) report before and after using eMedica regularly for 45 days.
- ❑ If a patient has Kidney failure then we need an creatinine level, urine output Test reports before and after using eMedica regularly for 45 days.
- ❑ If a patient has heart blockages issue then we need an Echocardiogram test report before and after using eMedica regularly for 45 days.
- ❑ The Salesperson should ask the patient whether they suffer from Autoimmune disease, and if they do then we need to alter the eMedica device for them because if they will use the existing device with the immunity-boosting program while suffering from Autoimmune disease they will feel tremendous pain in their body, and the reason behind the body pain is because they are already high on immune and still trying to boost their immunity forcefully which will lead to body pain.



GRACIAS  
ARIGATO  
SHUKURIA  
JUSPAXAR  
DANKSCHEEN  
TASHAKKUR ATU  
SUKSAMAKHMET  
BIYAN SHUKRIA  
THANK  
YOU  
BOLZIN MERCI  
GRAZIE  
MEHRBANI  
PALLDIES  
MAANE  
KOMAP-SUNNIDA  
GOZAIMASHITA  
EFCHARISTO  
VAQHANYELAY  
TINGGI

*ROHERA INC*

---

Patent by : Hemant Karamchand Rohera

Web Site : <http://emedica.in/>

---